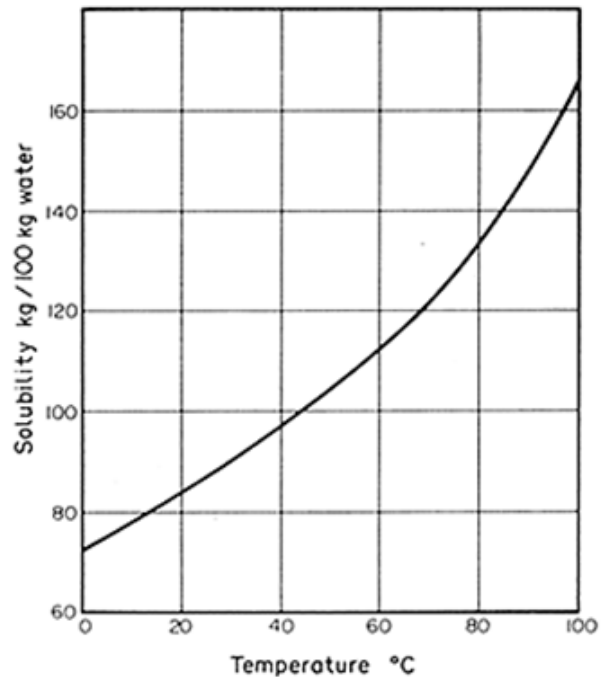


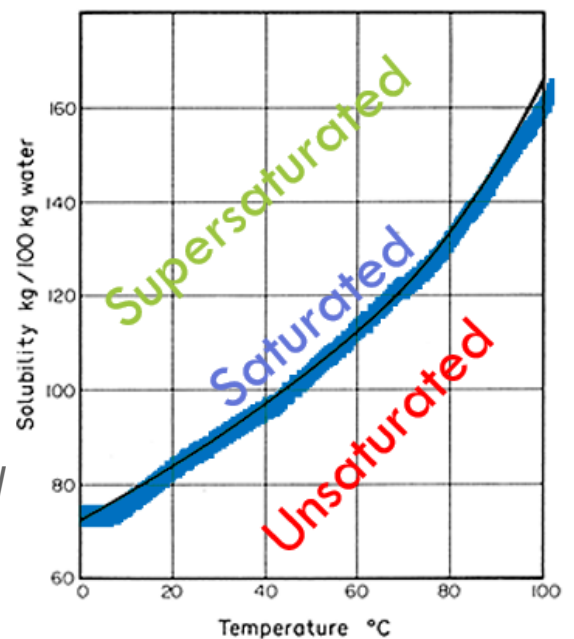
Solubility

- Definition: How much of a solute will dissolve in a solvent
 - Measured in $\frac{\text{g solute}}{100 \text{ g water}}$
- Solubility Curve: Shows how solubility changes with temperature



Describing How Much Has Dissolved

- Saturation: point at which a solution cannot dissolve any more (max amount)
 - Unsaturated: less than max
 - Saturated: exactly max
 - Supersaturated: more than max
 - *Few solutions will become supersaturated – once max amount is reached, rest will fall to the bottom as a solid*



[VIDEO 1](#)

[VIDEO 2](#)

[WORKSHEET](#)